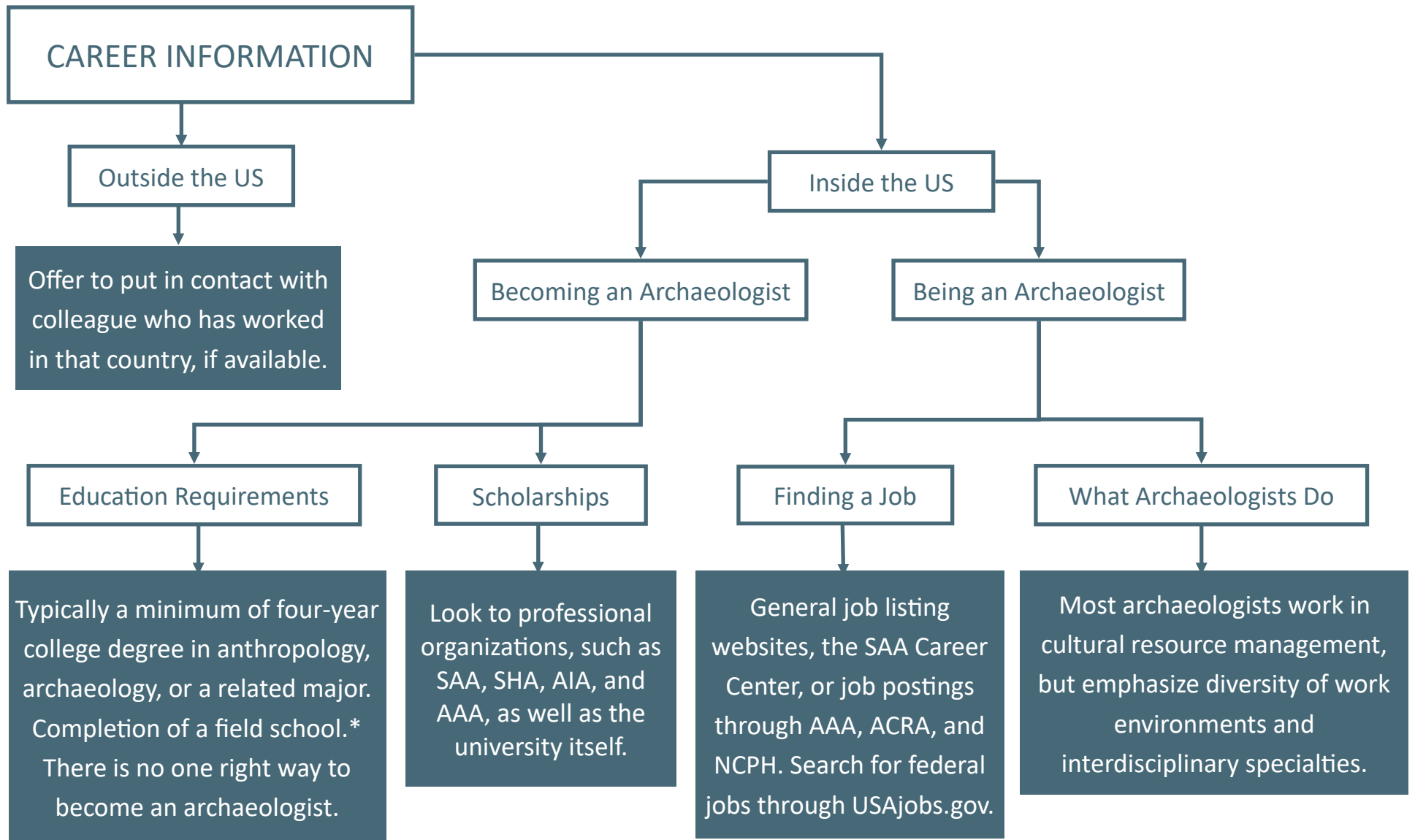


OSA: Office of the State Archaeologist. Find the [local OSA here](#).

SHPO: State Historic Preservation Office. Find the [local SHPO here](#).

THPO: Tribal Historic Preservation Office. Find the [local THPO here](#).

*[The Paleontological Society](#) provides a [Fossil ID online form](#), which is helpful for these questions.



SAA: Society for American Archaeology. Find SAA [scholarships here](#) or [Career Center](#).

SHA: Society for Historical Archaeology. Find SHA [scholarships here](#).

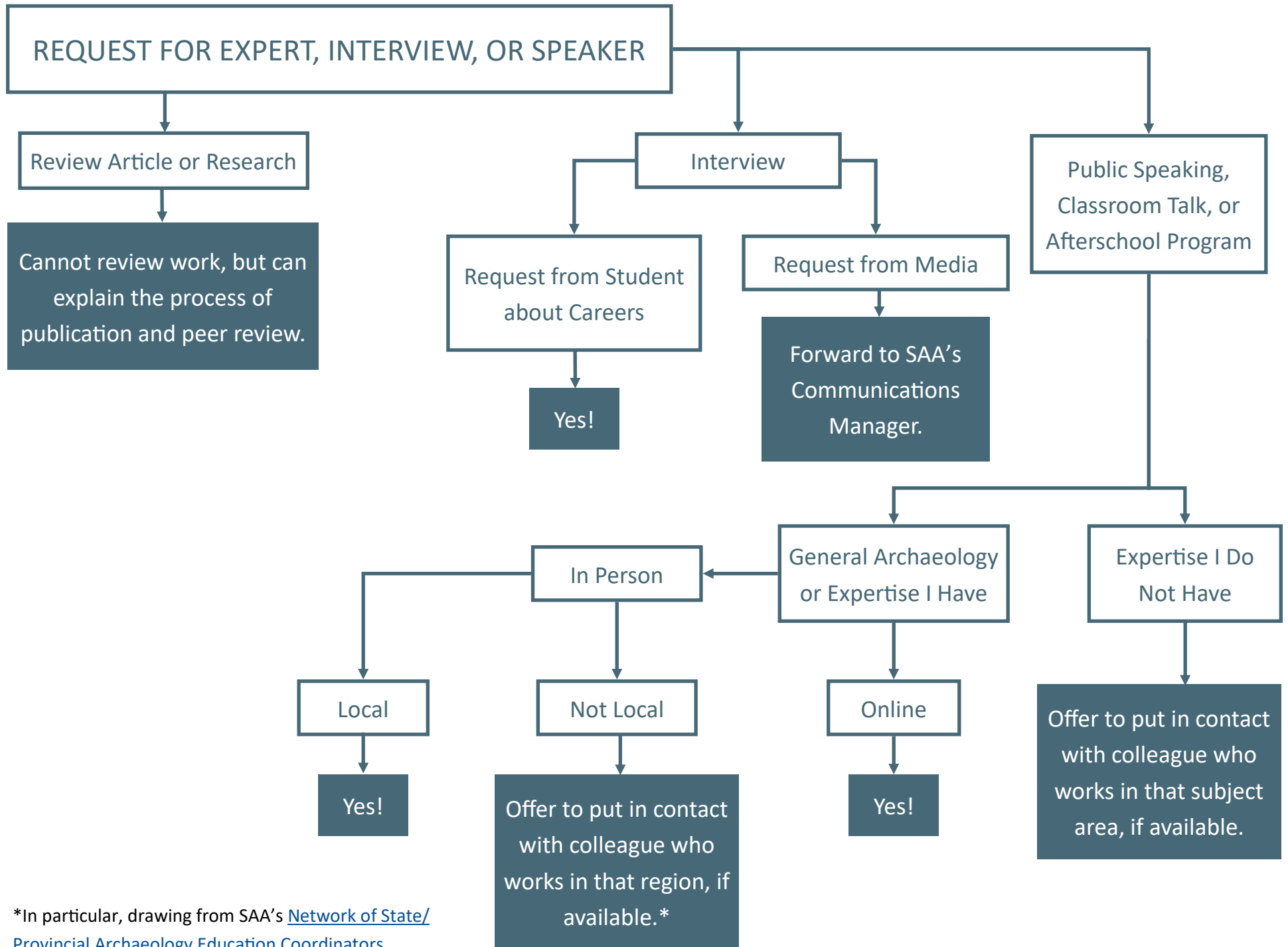
AIA: Archaeological Institute of America. Find AIA [scholarships here](#).

AAA: American Anthropological Association. Find AAA [fellowships and career resources here](#).

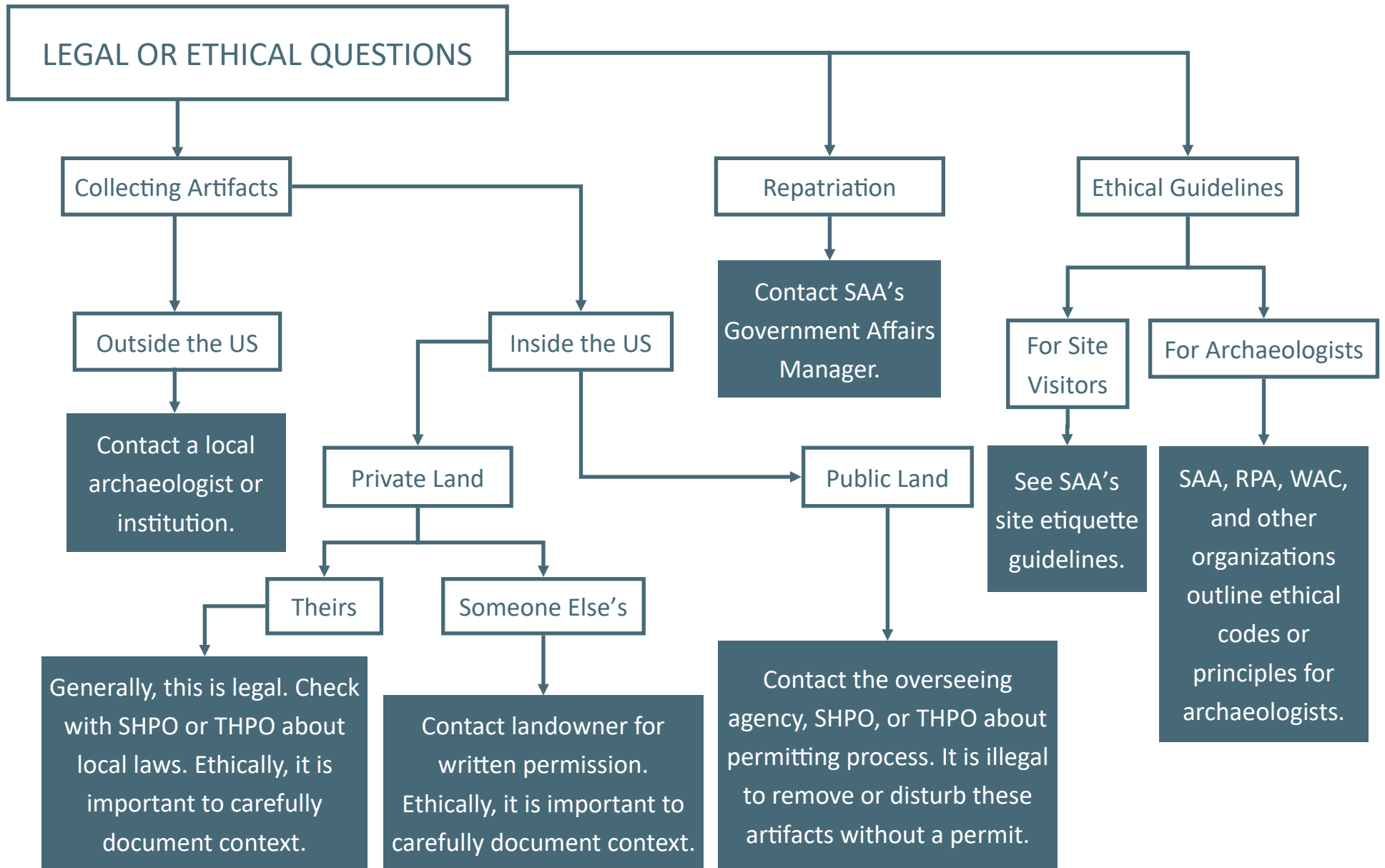
ACRA: American Cultural Resources Association. Find ACRA's [job board here](#).

NCPH: National Council on Public History. Find NCPH's [job board here](#).

*See also the US Secretary of the Interior [Professional Qualification Standards](#) and the Office of Personnel Management [Standards for Archaeologists](#).



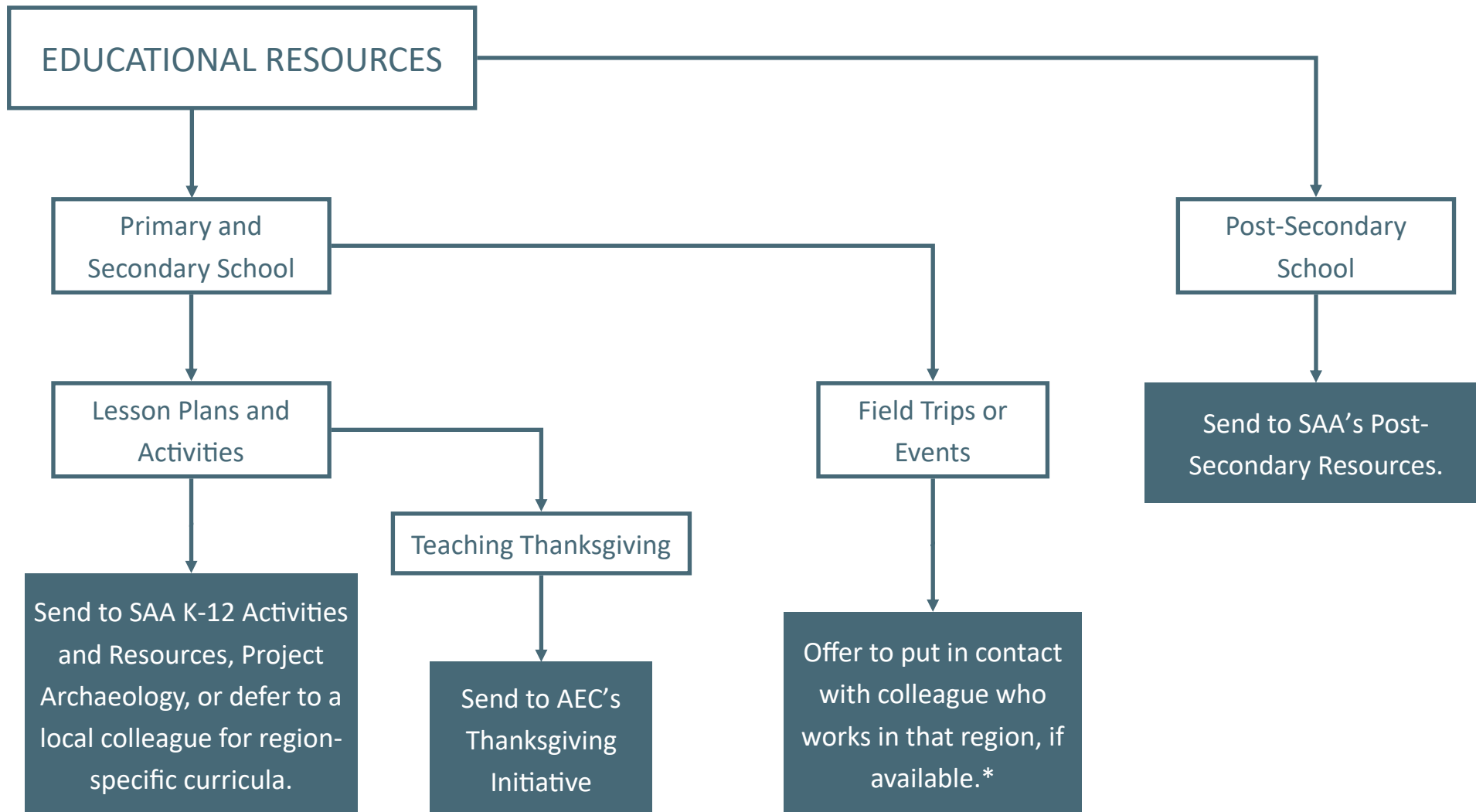
*In particular, drawing from SAA's [Network of State/Provincial Archaeology Education Coordinators](#).



SAA: Society for American Archaeology. Find the SAA [Principles of Archaeological Ethics here](#) and [site etiquette guidelines here](#).

RPA: Register of Professional Archaeologists. Find the RPA [Code and Standards here](#). Along with the Chartered Institute for Archaeologists, RPA maintains the [Archaeological Ethics Database](#).

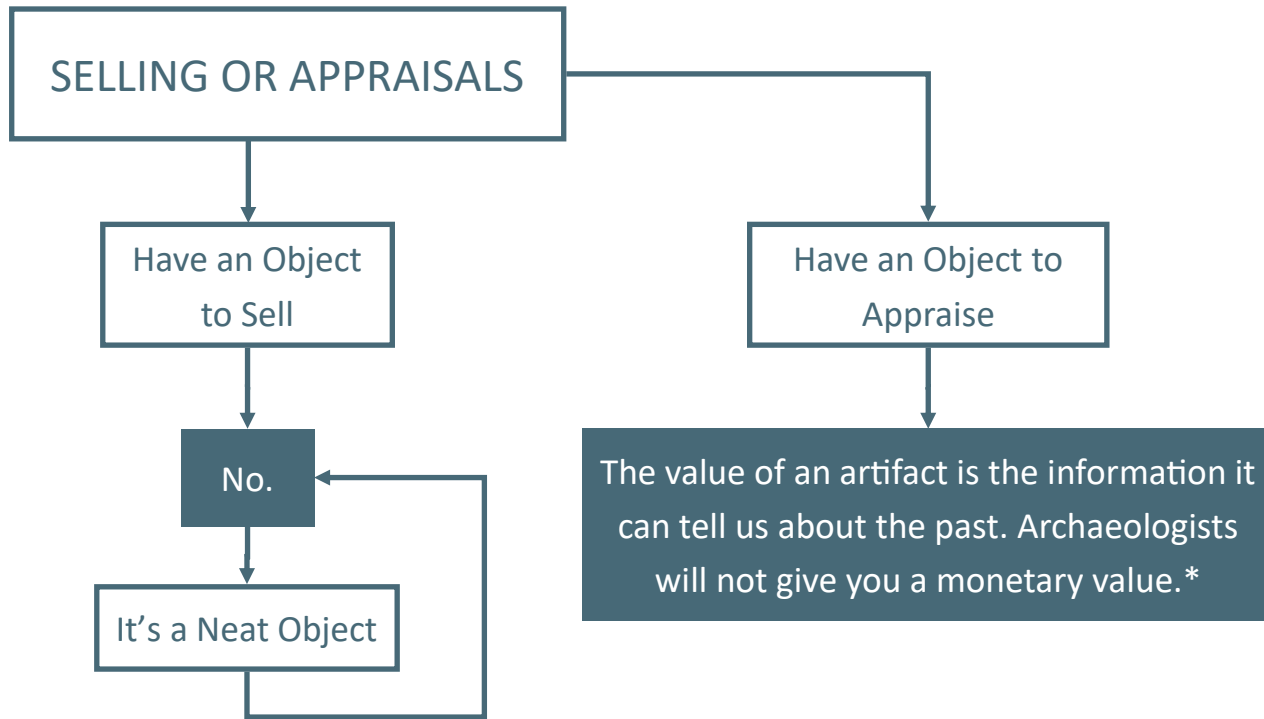
WAC: World Archaeological Congress. Find the WAC [Code of Ethics here](#).



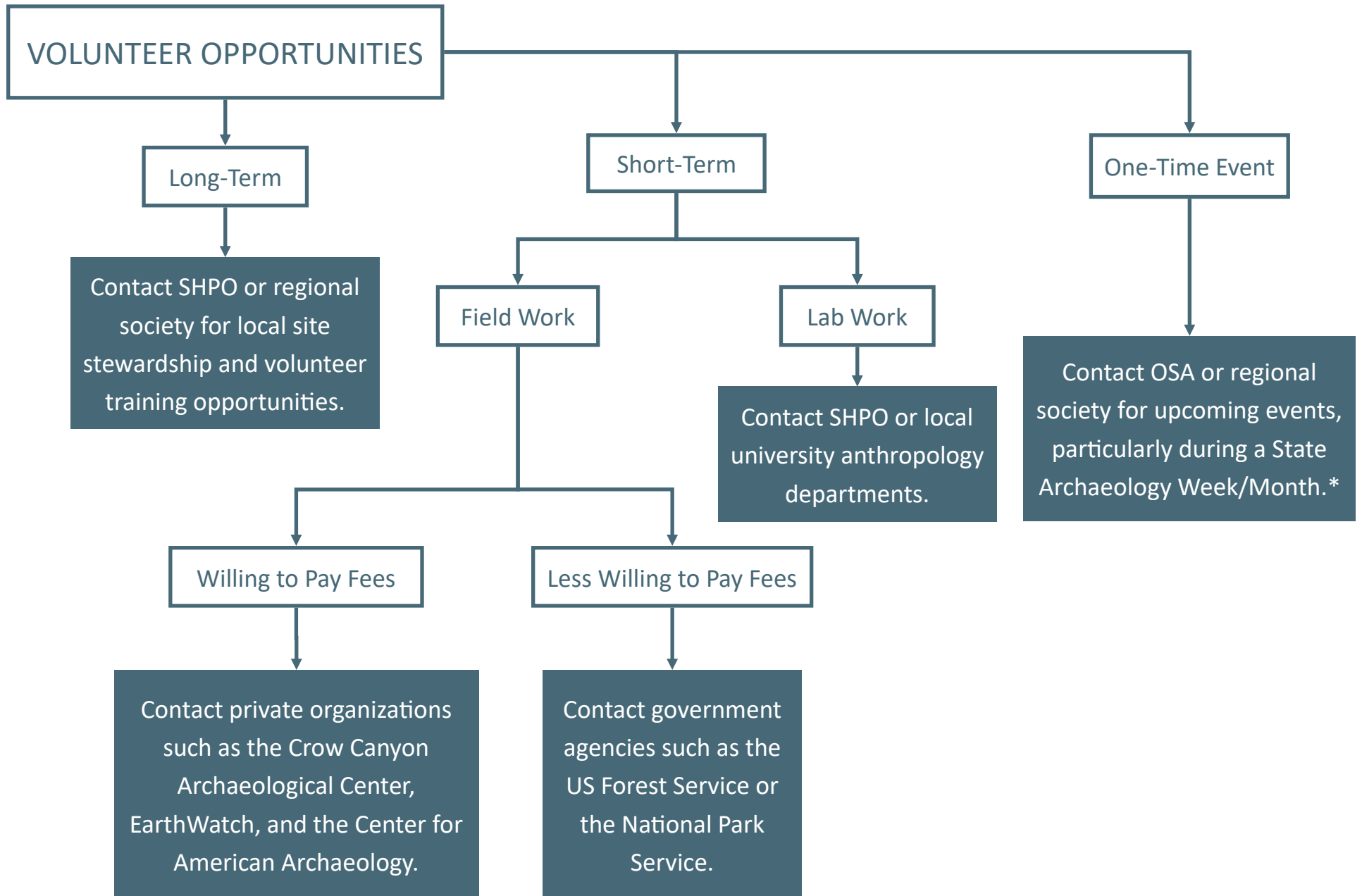
*In particular, drawing from SAA's [Network of State/Provincial Archaeology Education Coordinators](#) or that region's public archaeology organization (like [FPAN](#), [UPAN](#), [OKPAN](#), [TxPAN](#), DC's [Archaeology in the Community](#), etc.).

SAA: Society for American Archaeology. Find the [K-12 Activities and Resources](#) and [Post-Secondary Resources](#) here.

AEC: Archaeology Education Clearinghouse is a partnership between SAA and other archaeological organizations. Find the [Thanksgiving Initiative resources](#) here.



*Can pass along the Smithsonian's [list of appraisal resources](#).



SHPO: State Historic Preservation Office. Find the [local SHPO here](#).

OSA: Office of the State Archaeologist. Find the [local OSA here](#).

*See a [list of Archaeology Week/Months](#) by state.